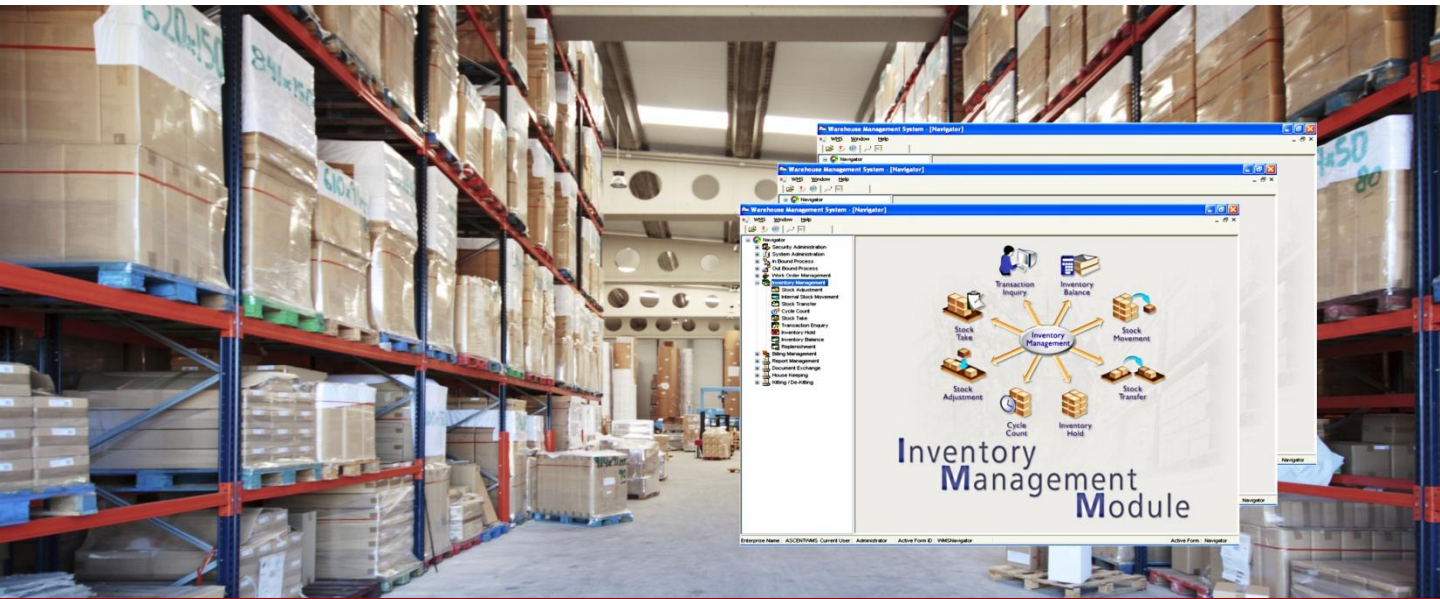


Enterprise Class Warehouse Management System

Enabling business growth and productivity goals with proven management system



ATLAS™ Warehouse Management System

Standard Modules

- System Administration
- Inbound Administration
- Outbound Administration
- Work Order Management
- Kit/ De-kit Management
- Warehouse Inventory Management
- Report Generation
- Archive Management
- Documents Import and Processing

Optional Modules

- Billing and Customer Service
- Advanced ERP Integration
- Mobile Warehouse Operation

ATLAS™ Warehouse Management System (WMS) is designed to help enterprises achieve better inventory visibility and accuracy with measurable operational efficiency and improvement in customer service level.

ATLAS™ WMS offers users the flexibility to configure business workflows, including goods receipt, allocation, releases, billing and other key inventory control functionalities. For third-party logistics providers, the third party logistics billing module* is ideal for managing various billing parameters such as storage, service and value-added charges.

ATLAS™ WMS can be easily integrated with AIDC and RFID technologies to enable logistics operators to monitor the real-time movement of inventory so as to ensure efficient warehouse operations. In addition, it also supports integration with ERP systems

and databases (Oracle® and Microsoft® SQL) – all with the aim of reducing data errors, unnecessary labor and paperwork, which usually arise from disintegrated software systems and manual entries.

Built as a highly scalable and flexible software system, ATLAS™ WMS' strength lies in its unique 3-tier architecture design, which helps to minimize disruption to the daily warehouse operations when changes are administered to the system, database, business logic or user interface.

To support growing business needs, ATLAS™ WMS can be deployed across multiple warehouses, distribution centers and customer accounts that are spread across different geographic territories.

* *Optional module*



About ATLAS™ Solution Suite

Autoscan Technology's ATLAS (Advanced Transportation-Logistics Application Services) suite of supply chain solutions includes Warehouse, Container Yard and Transport Management Systems. These systems can be implemented with automatic identification and data capture (AIDC) and radio frequency identification (RFID) devices to provide real-time asset tracking capabilities, which in turn create transparency and visibility throughout the entire supply chain.

About Autoscan Technology

Since 1992, Autoscan Technology has helped companies to define strategies, streamline processes, and implement systems with its innovation and thought leadership in supply chain management, AIDC and RFID technologies.

Main Office

Autoscan Technology Pte Ltd
[Co. Regn. No.: 199204424D]
600 Sin Ming Avenue
4th Floor CityCab Building
Singapore 575733
Tel: (65) 6210-6390
Fax: (65) 6210-6389
Email: info@sg.autoscan.biz
URL: www.autoscan.biz

Malaysia Office

Autoscan Technology Sdn Bhd
D-1-11, NO.2, Jalan Pju, 1A/41B,
Pusat Dagangan Nzx, Ara Jaya Pju
1A,47301 Petaling Jaya,
Selangor, Malaysia
Tel: +603-7885-8330 / 20
Fax: +603-7885-8340
Email: info@my.autoscan.biz

China Office – Suzhou Industrial Park

Autoscan Technology Co. Ltd
Room 1&2, Blk A #06-06,
No. 5 Xinghan St,
Suzhou China 215021
Tel: +86-0512-6761-6728 / 38
Fax: +86-0512-6761-6758
Email: info@cn.autoscan.biz

China Office – Shanghai

Autoscan Technology Co. Ltd
Room 18B, Blk B,
The Regalia Building, No 29
Xiang Cheng Rd, Pudong New Area,
Shanghai, China 200122
Tel: +86-021-5831-2503 / 9291
Fax: +86-021-5830-5548
Email: info@cn.autoscan.biz

Copyright © 2010 Autoscan Technology Pte Ltd. All rights reserved. ATLAS is a registered trademark of Autoscan Technology Pte Ltd. All other names mentioned herein may be trademarks of their respective owners. We reserve the right to make changes or improvements to any of the products described in this document without prior notice.

Standard Modules

System Administration

This module allows businesses to create master profiles (for the enterprise, customers, products, warehouse spaces and system users), users roles and access limits. Users can also configure business workflows, including receipt, put-away, picking and invoicing.

Inbound Process

This module supports the receipt and storage of goods entering the warehouse. Goods allocation can be done manually or automatically based on the pre-defined business workflow.

Outbound Process

This module supports the goods release and picking process. Users can issue shipment and delivery orders, manage multiple goods picking, and specify packing procedures for outgoing goods.

Work Order Management

This module supports the creation and closure of value-added services, which are not related to the usual receiving and releasing operations. An example is the special catering of a one-time invoicing documentation charge.

Kit/ De-kit Management

This module allows users to manage and close the stock kitting and de-kitting process.

Warehouse Inventory Management

This module contains rich functionalities to facilitate internal stock movement and transaction. Some of the useful functions include stock adjustment, transfer, cycle count, stock-take, and transaction balance enquiries.

Archive Management

This module helps users to manage accumulated data, jobs and transactional archives. Users can set archiving policies to improve the system's performance.

Document Import and Processing

This module allows users to import and verify those documents from consignees and suppliers.

Reports Generation

This module allows users to generate useful standard and customized reports. These reports can be easily exported to common file formats such as Acrobat® PDF, Microsoft® Word and Excel.

Optional Modules

Billing and Customer Service

Designed with third-party logistics providers in mind, this module supports billing of storage and inventory handling, and generation of customers' invoices. It also caters for billing complexities such as user-defined billing schedules, methods and basis.

Advanced ERP Integration

ATLAS™ WMS also supports integration with market-leading ERP systems and third party database platforms to facilitate seamless data and transaction synchronization.

Mobile Warehouse Operations

ATLAS™ WMS can deliver mobile warehouse functionalities such as goods receipt, release, transfers, cycle count and stock take to handheld mobile devices. Depending on the user's requirements, the system can also support real-time batch processing.

Getting Started

ATLAS™ WMS is available today as a SaaS (Software as a Service) solution to enable small-to-medium sized businesses to experience the benefits it delivers with minimized cost of ownership and shorter implementation time frame. It is also available on a turnkey basis for larger firms. For more information on how ATLAS™ WMS can help you in improving your inventory handling and order fulfillment needs, please email info@sg.autoscan.biz.